

IFICS WEB CONFERENCE 2020

Infographics
Fracture Shaft Femur
in
Children

Dr Swapnil M Keny



SPICA Casting - Indications

Immediate

Immediate +
Delayed

Supplement
to Internal
Fixation

Contraindications



- Poly trauma
- Skin Issues
- Shortening > 2.5 CMs
- Altered Sensations

Alternatives



- Flexible IM Nails
- External Fixator
- Plate & Screw Fixation



Flexible Nails - Indications

Age - 5 to 12 y

Weight < 50 Kgs

Mid Shaft
Fractures

Contraindications



- Heavily Built Adolescents
- Contaminated Compound Injuries
- Metaphysiodiaphyseal injuries
- Severely comminuted Fractures which may warrant additional Fixation

Alternatives



- Trochanteric Femoral Nail
- External Fixator
- Plate & Screw Fixation



External Fixator - Indications

Open
Injuries

Poly trauma

Severe
Communion

Contraindications

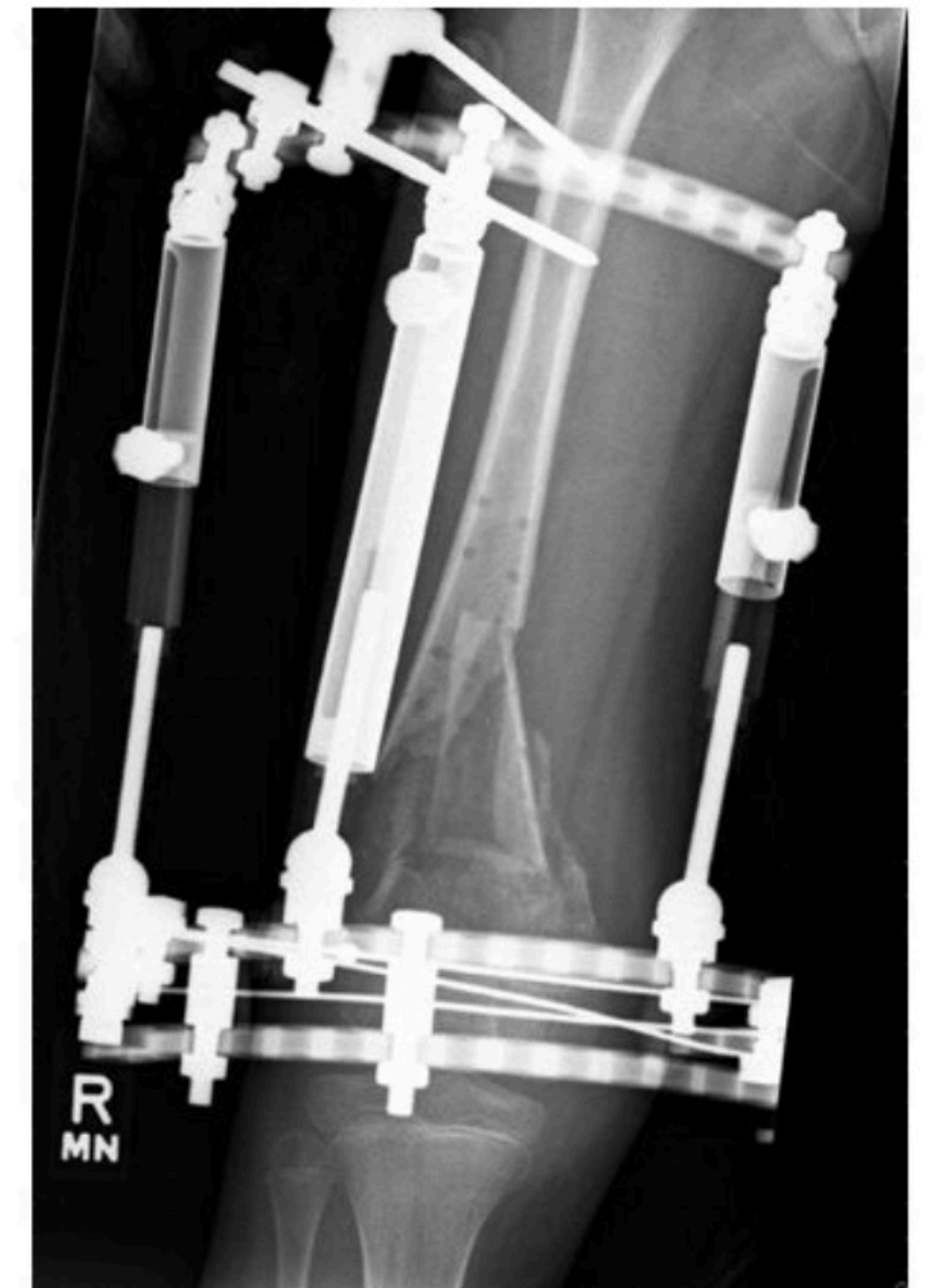


- Clean compound wounds
- Children with CNS issues
- Fractures extending to joints

Alternatives



- Flexible IM Nails
- Plate & Screw Fixation



Open Femur Plating - Indications

Proximal Femur
Fractures

Distal Femur
Fractures

Contraindications

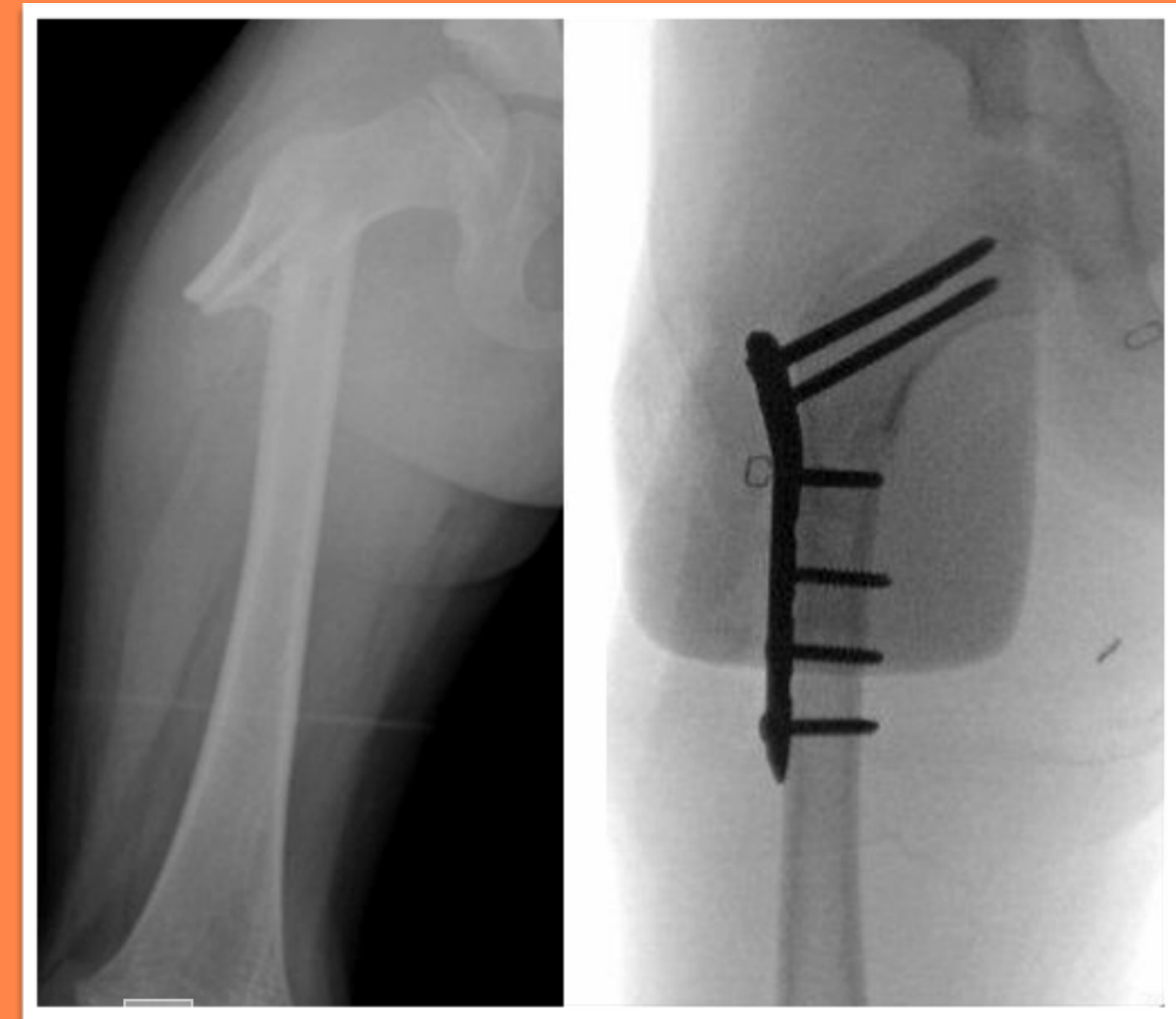


- Length Unstable #'s
- Skin Issues
- Comminuted #'s

Alternatives



- Flexible IM Nails
- External Fixator
- Rigid IM Nailing



Submuscular Plating - Indications

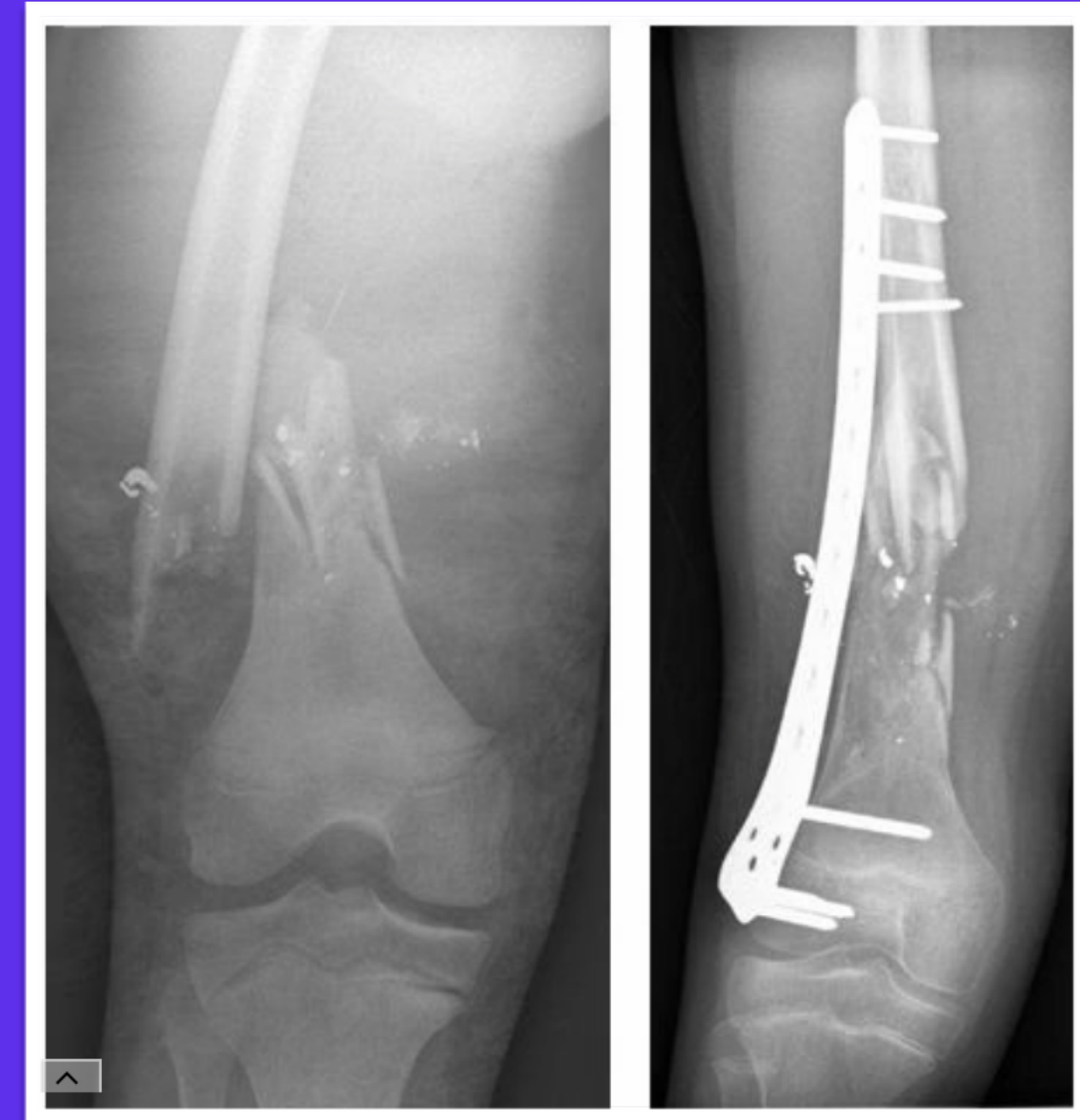
Disadvantages



- Learning Curve
- Stress Riser
- Implant Removal
- Valgus Deformity

Distal
Fractures

Comminuted
Fractures



Trochanteric Entry Nail - Indications

Disadvantages



- Risk of AVN during trochanteric entry

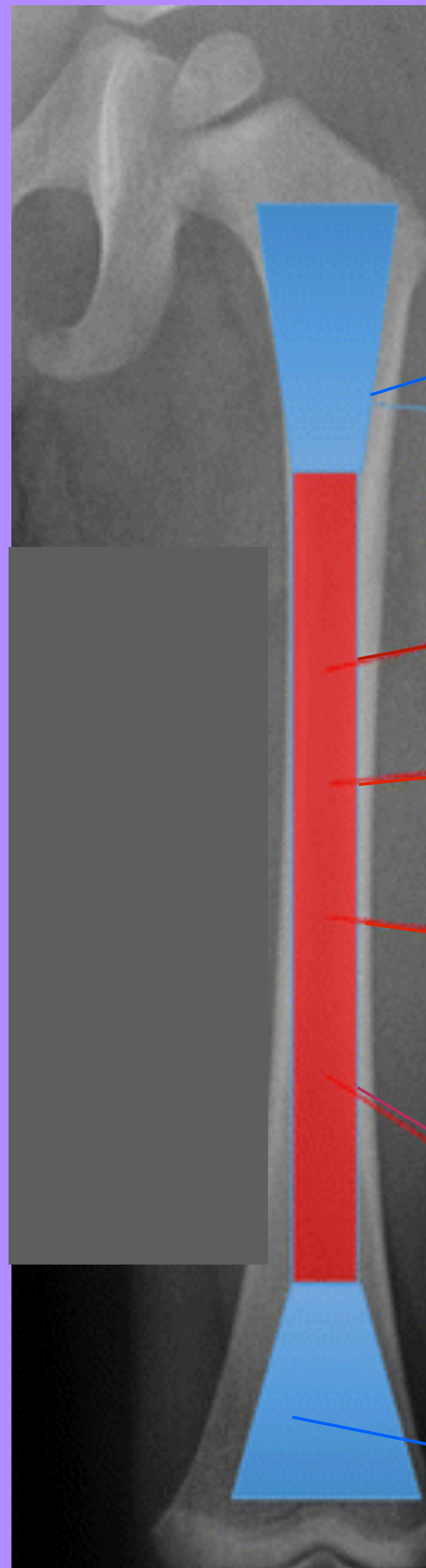
Older
Patients

Heavier
Children

Comminuted
Fractures



Pediatric Femur Fractures : Treatment Algorithm



Proximal Fractures

Internal / External Fixation

< 6 Months

Pavlik's Harness/ Short Interval Traction initially

6 Months - 5 years

Skin traction only
Skin traction followed by Spica Casting
Spica casting Only

5 - 12 years

Elastic Nailing
Plating or Ex Fix for Communitied Fractures
Hybrid Construct for Unstable Fractures

> 12 years

< 50 Kgs

Elastic Nailing is Length Stable

Elastic Nailing +/-Ex Fix or Mippo if length unstable

Distal Fractures

Plate Fixation

> 50 kgs

Mippo/IM Nail